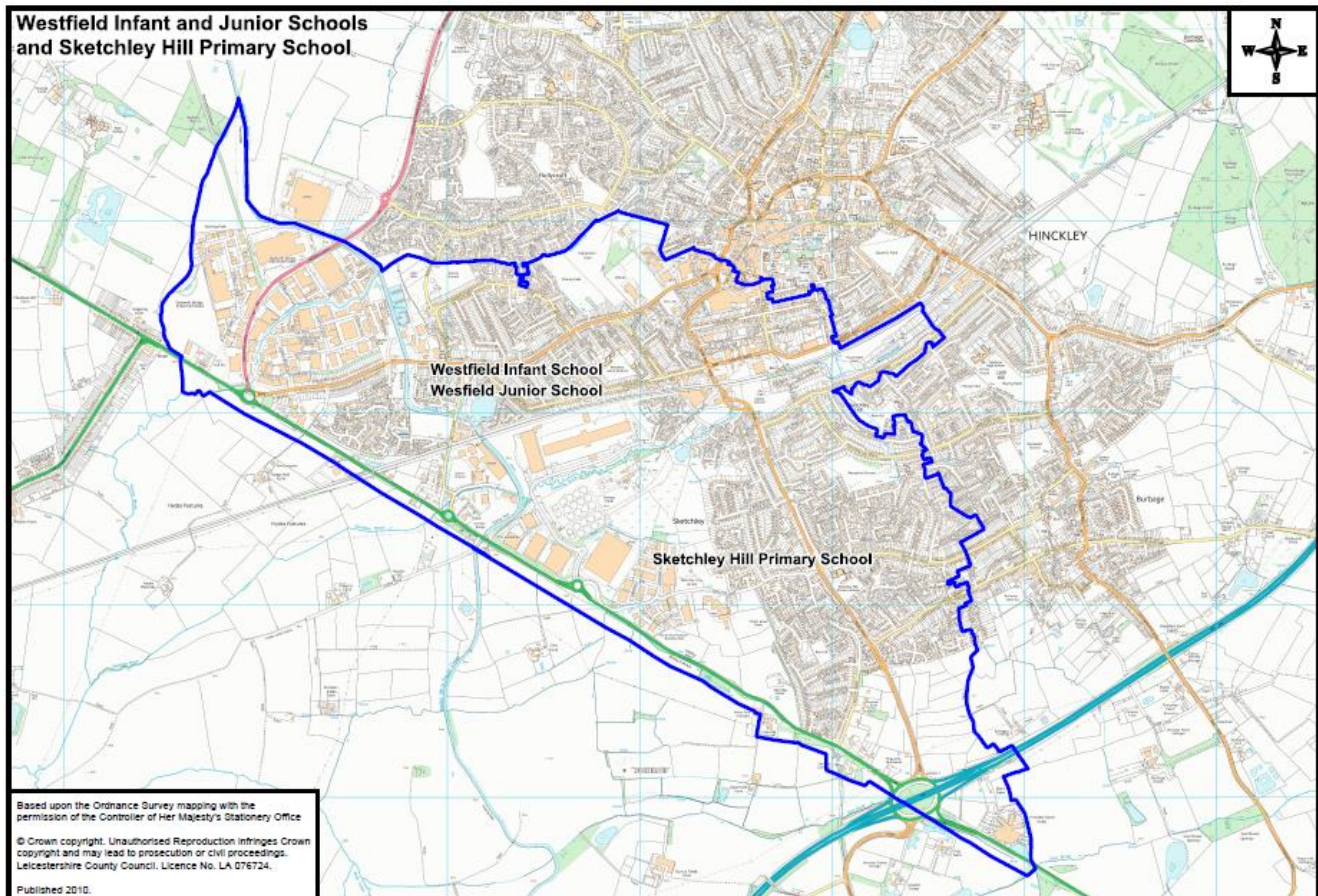
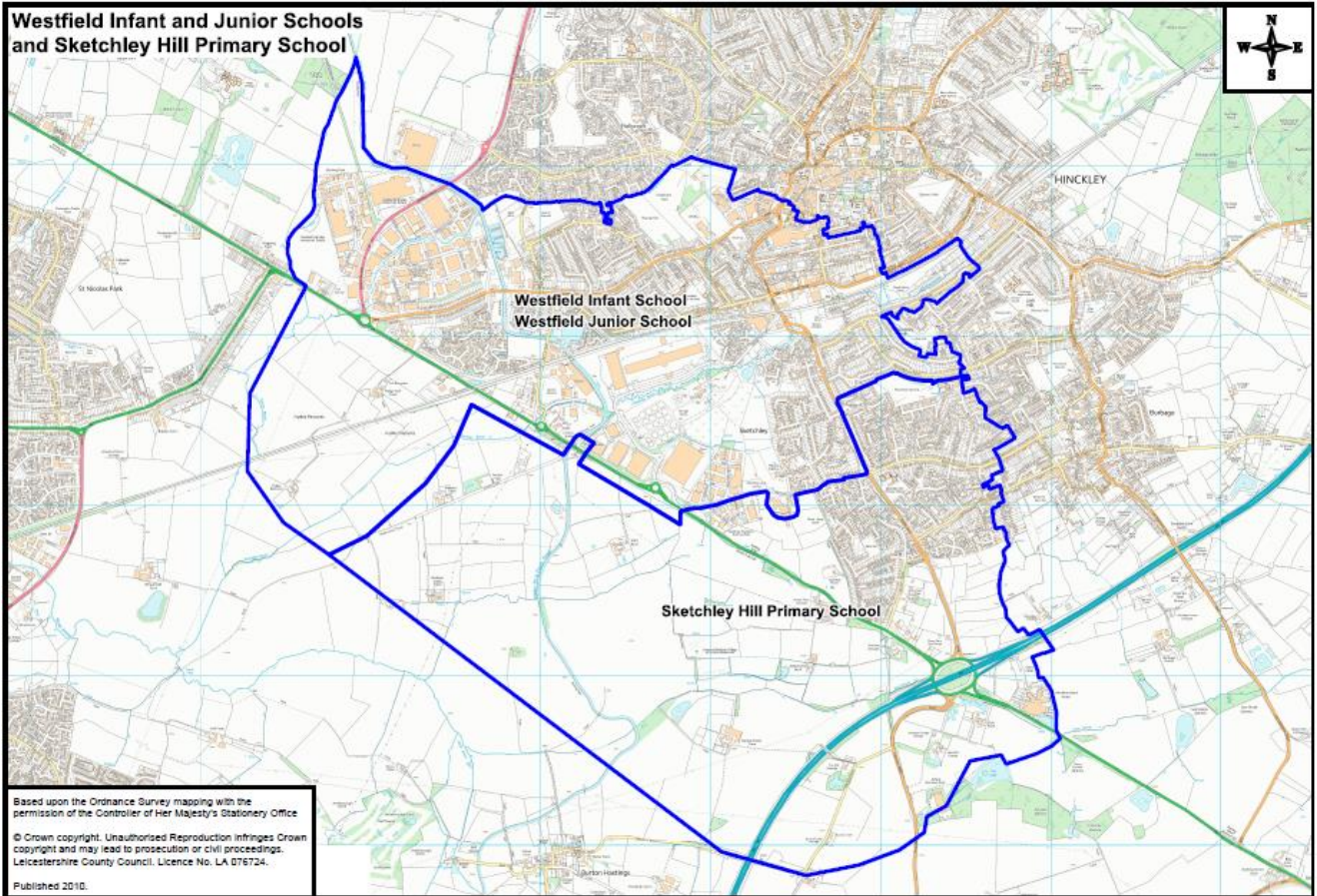
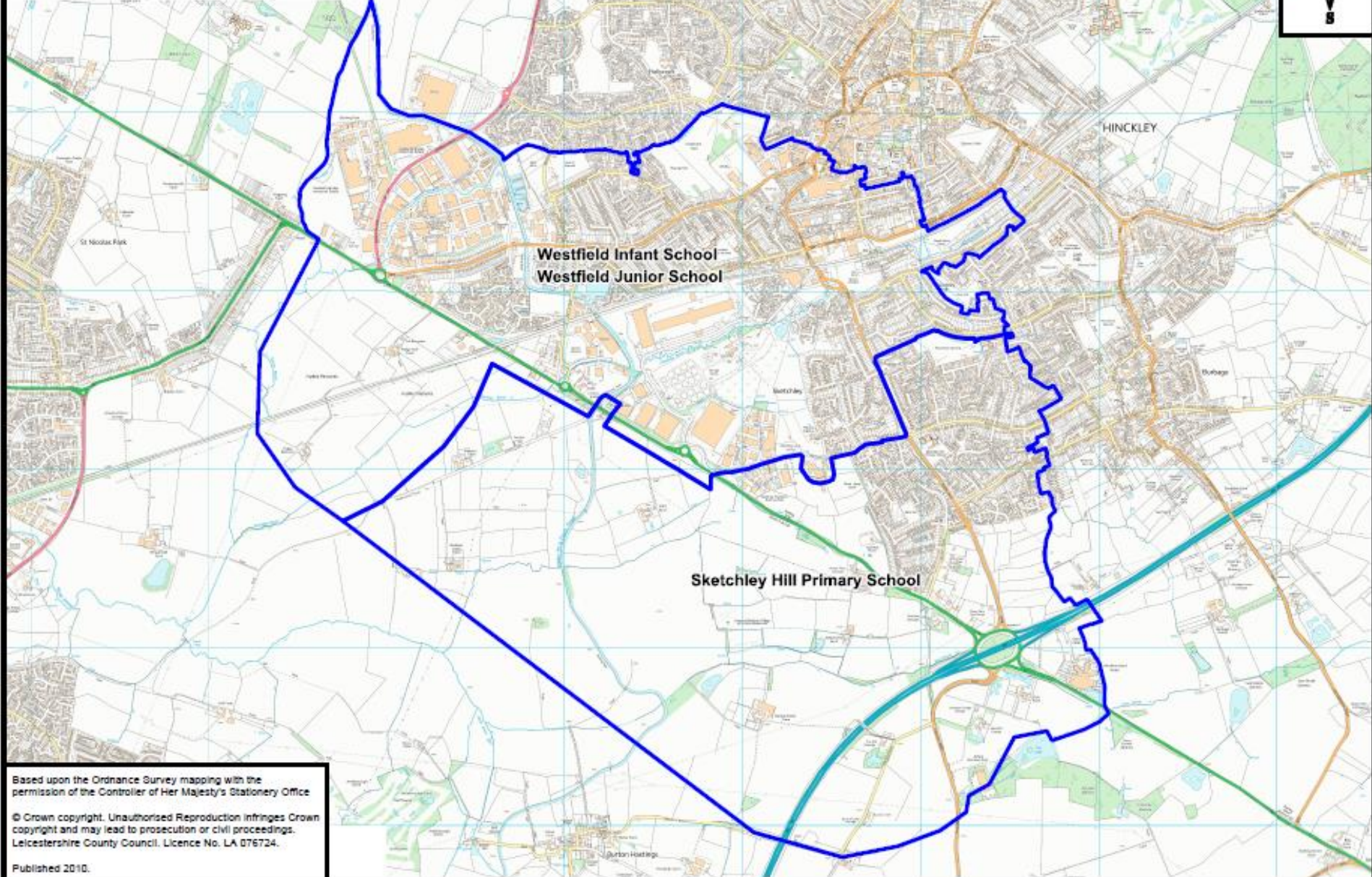


Patch County Councillor	School	Significant Increase
Ms. A. Wright CC	Burbage Sketchley Hill	<p>Increase from 420 to 630</p> <p>The school is being extended to accommodate additional pupils arising from an increase in the birth rate and the impact of housing developments being constructed in the area.</p> <p>It is related to the proposed catchment area changes with Westfield Infant and Junior Schools which are also detailed in the consultation.</p>
Mrs Deborah Taylor CC	The Latimer Primary School, Anstey	<p>Increase from 315 to 420</p> <p>The school is being extended to accommodate additional pupils arising from an increase in the birth rate and the impact of housing developments being constructed in the school catchment area.</p> <p>The Woolden Hill Primary will be affected by the proposal, because it will increase the supply of available school places in Anstey but we are not planning any changes to the catchment areas.</p>
Mr. P. Bedford CC	Desford Primary School	<p>Increase from 315 to 420</p> <p>The school is being extended to accommodate additional pupils arising from an increase in the birth rate and the impact of housing developments being constructed in the area.</p> <p>There is unlikely to be an impact on other schools in the area.</p>



**Westfield Infant and Junior Schools
and Sketchley Hill Primary School**

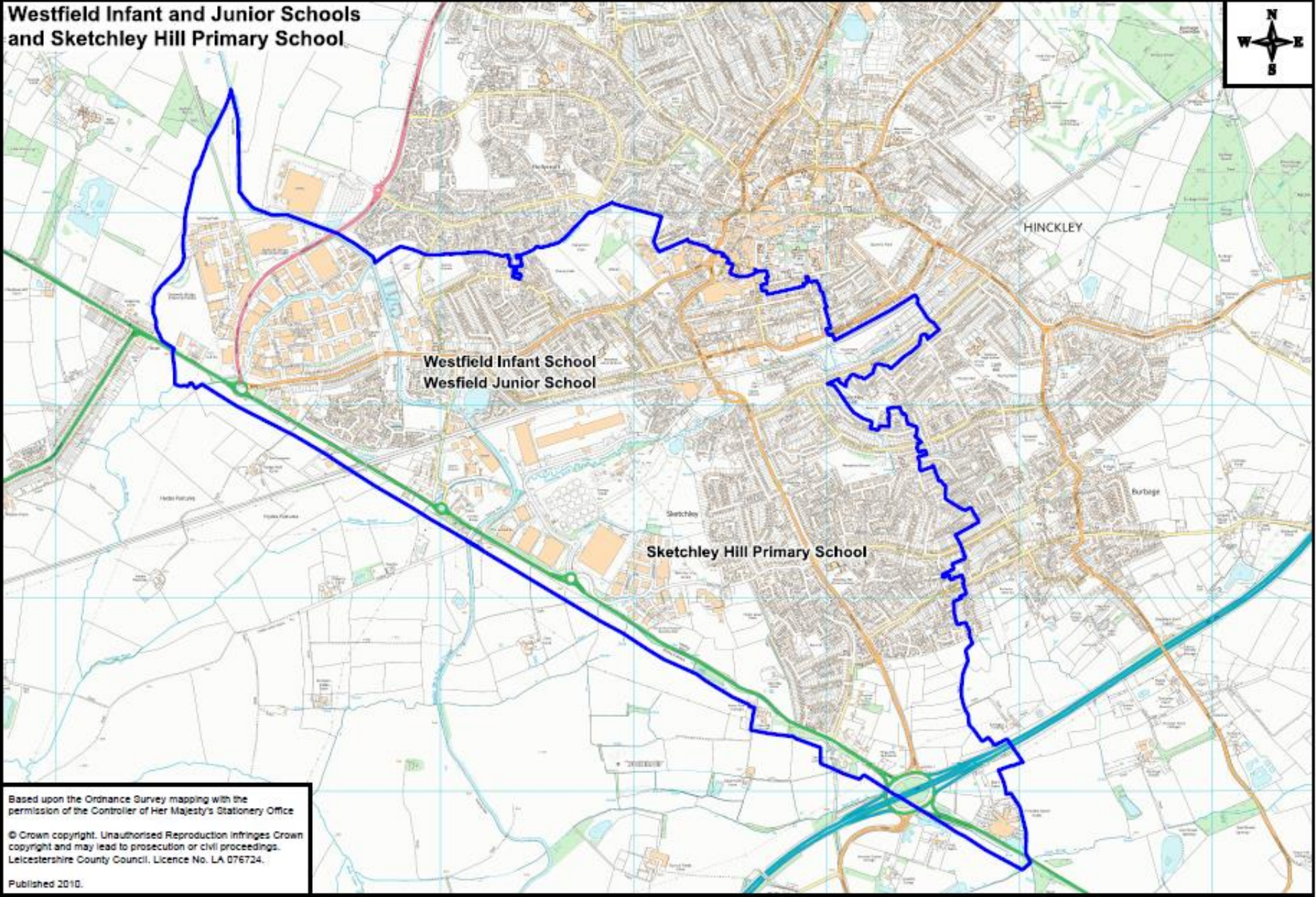


Based upon the Ordnance Survey mapping with the permission of the Controller of Her Majesty's Stationery Office

© Crown copyright. Unauthorized reproduction infringes Crown copyright and may lead to prosecution or civil proceedings. Leicestershire County Council. Licence No. LA 076724.

Published 2010.

**Westfield Infant and Junior Schools
and Sketchley Hill Primary School**



Based upon the Ordnance Survey mapping with the permission of the Controller of Her Majesty's Stationery Office

© Crown copyright. Unauthorised reproduction infringes Crown copyright and may lead to prosecution or civil proceedings. Leicestershire County Council. Licence No. LA 076724.

Published 2010.